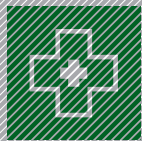


# SOCIAL-HEALTH FACILITIES

SELECTION  
OF WORKS





## PROJECT: RENOVATION AND EXTENSION OF THE SANT JOAN DE DÉU HOSPITAL, MANRESA

**Developer:** Althaia Xarxa Assistencial de Manresa, Fundació Privada

**Management:** Mr Jaume Espinal i Farré and Mr Ferran de los Santos

**Constructed area:** 21.181 m<sup>2</sup>

**Location:** MANRESA



ISO 9001  
Quality  
Management  
System  
1999



ISO 14001  
Environmental  
Management  
System  
2004



OHSAS 18001  
Occupational  
Health and Safety  
Management System  
2006

**CONSTRUCCIONS COTS I CLARET**

**TLF** 938 734 404  
**FAX** 938 735 905

**E-MAIL** [cotsiclaret@cotsiclaret.com](mailto:cotsiclaret@cotsiclaret.com)  
**WEB** [www.cotsiclaret.com](http://www.cotsiclaret.com)



**COTS I CLARET**



## PROJECT: PHASE 2 OF THE RESTORATION AND OF EXTENSION OF THE SANT JOAN DE DÉU HOSPITAL

**Developer:** Althaia Xarxa Assistencial Universitària de Manresa, Fundació Privada

**Management:** Estudi PSP Arquitectura SCP - Mr. Jaume Espinal Farré - Mr. Joan Ribera Mestres

**Constructed area:** 30.620 m<sup>2</sup>

**Developed area:** 12.961 m<sup>2</sup>

**Location:** MANRESA



**CONSTRUCCIONS COTS I CLARET**

**TLF** 938 734 404  
**FAX** 938 735 905

**E-MAIL** [cotsiclaret@cotsiclaret.com](mailto:cotsiclaret@cotsiclaret.com)  
**WEB** [www.cotsiclaret.com](http://www.cotsiclaret.com)







## PROJECT: CONSTRUCTION OF THE DEPARTMENTAL HOSPITAL OF GONAÏVES

**Developer:** UNOPS - United Nations Office for Project Services

**Management:** Aedifica + SNC Lavalin

**Constructed area:** 9.354 m<sup>2</sup>

**Location:** GONAÏVES - HAITÍ



ISO 9001  
Quality  
Management  
System  
1999



ISO 14001  
Environmental  
Management  
System  
2004



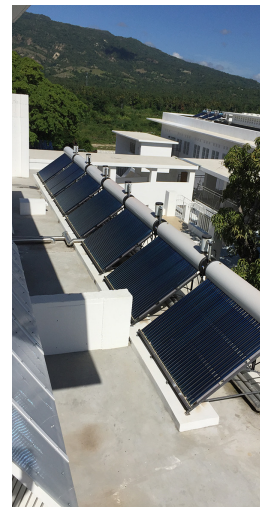
OHSAS 18001  
Occupational  
Health and Safety  
Management System  
2006

**CONSTRUCCIONS COTS I CLARET**

**TLF** 938 734 404  
**FAX** 938 735 905

**E-MAIL** [cotsiclaret@cotsiclaret.com](mailto:cotsiclaret@cotsiclaret.com)  
**WEB** [www.cotsiclaret.com](http://www.cotsiclaret.com)





## PROJECT: RECONSTRUCTION OF SANT MICHEL DE JACMEL HOSPITAL

**Developer:** Canadian Red Cross Society

**Management:** Aedifica + Yamashita / Yachiyo

**Constructed area:** 4.389,26 m2

**Location:** JACMEL - HAÏTI



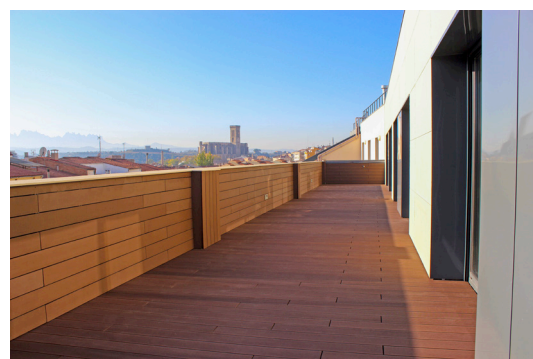
**CONSTRUCCIONS COTS I CLARET**

**TLF** 938 734 404  
**FAX** 938 735 905

**E-MAIL** [cotsiclaret@cotsiclaret.com](mailto:cotsiclaret@cotsiclaret.com)  
**WEB** [www.cotsiclaret.com](http://www.cotsiclaret.com)







## PROJECT: EXTENDING THE SANT ANDREU RESIDENCE

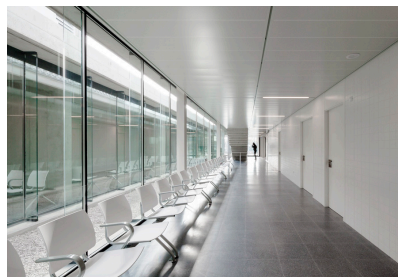
**Developer:** Fundació Sociosanitària de Manresa

**Management:** Mr. Jaume Espinal Farré / Ms. Alicia Vila Soler

**Constructed area:** 3.139,35 M2

**Location:** MANRESA





## PROJECT: NEW CONSTRUCTION OF PRIMARY HEALTH CENTER

**Developer:** Servei català de la salut – Infraestructures de la Generalitat de Catalunya

**Management:** Mr. Esteve Puigdengolas i Legler

**Constructed area:** 1.721,81 m<sup>2</sup>

**Location:** PIERA



ISO 9001  
Quality  
Management  
System  
1999



ISO 14001  
Environmental  
Management  
System  
2004



OHSAS 18001  
Occupational  
Health and Safety  
Management System  
2006

**CONSTRUCCIONS COTS I CLARET**

**TLF** 938 734 404  
**FAX** 938 735 905

**E-MAIL** [cotsiclaret@cotsiclaret.com](mailto:cotsiclaret@cotsiclaret.com)  
**WEB** [www.cotsiclaret.com](http://www.cotsiclaret.com)

 **COTS i CLARET**



## PROJECT: NEW STAFF CANTEEN FOR THE SANT JOAN DE DÉU HOSPITAL

**Developer:** Hospital Sant Joan de Déu de Barcelona

**Management:** Llogueras Clotet Architects Office (Mr. Joan Llogueras & Ms. Rosa Clotet)

**Constructed area:** 1.300 m<sup>2</sup>

**Location:** ESPLUGUES DE LLOBREGAT





**PROJECT: CONSTRUCTION OF SOCIAL-HEALTH CENTRE**

**Developer:** EDICLINIC SOCIETAT IMMOBILIARIA, S.L.

**Management:** Mr Jordi Graells i Fontarnau, Mr Francesc Padrós i Marqués

**Constructed area:** 7.472,15 m2

**Location:** MOLINS DE REI



**CONSTRUCCIONS COTS I CLARET**

**TLF** 938 734 404  
**FAX** 938 735 905

**E-MAIL** [cotsiclaret@cotsiclaret.com](mailto:cotsiclaret@cotsiclaret.com)  
**WEB** [www.cotsiclaret.com](http://www.cotsiclaret.com)





## PROJECT: COMTALS II – RESIDENCE FOR PEOPLE WITH LEARNING DISABILITIES

**Developer:** Foundation Ampans

**Management:** Sarrate & Juanola arquitectura, SCP

**Constructed area:** 2.227,92 m<sup>2</sup>

**Location:** MANRESA



ISO 9001  
Quality  
Management  
System  
1999



ISO 14001  
Environmental  
Management  
System  
2004



OHSAS 18001  
Occupational  
Health and Safety  
Management System  
2006

**CONSTRUCCIONS COTS I CLARET**

**TLF** 938 734 404  
**FAX** 938 735 905

**E-MAIL** [cotsiclaret@cotsiclaret.com](mailto:cotsiclaret@cotsiclaret.com)  
**WEB** [www.cotsiclaret.com](http://www.cotsiclaret.com)

 **COTS i CLARET**





## PROJECT: CONSTRUCTION OF SHELTERED HOUSING FOR THE ELDERLY, CIVIC FACILITIES FOR ASSOCIATIONS AND SOCIAL WELFARE OFFICE

**Developer:** Government of Catalonia - GISA

**Management:** Mr Pere Santamaria

**Constructed area:** 1.968,68 m<sup>2</sup>

**Location:** MANRESA



ISO 9001  
Quality  
Management  
System  
1999



ISO 14001  
Environmental  
Management  
System  
2004



OHSAS 18001  
Occupational  
Health and Safety  
Management System  
2006

**CONSTRUCCIONS COTS I CLARET**

**TLF** 938 734 404  
**FAX** 938 735 905

**E-MAIL** [cotsiclaret@cotsiclaret.com](mailto:cotsiclaret@cotsiclaret.com)  
**WEB** [www.cotsiclaret.com](http://www.cotsiclaret.com)



## PROJECT: CONSTRUCTION OF A PRIMARY HEALTHCARE CENTRE AND A SOCIAL-HEALTH CENTRE

**Developer:** Fundació Sociosanitaria de Manresa

**Management:** Mr Jaume Espinal i Farré

**Constructed area:** 4.554 m<sup>2</sup>

**Location:** MANRESA



ISO 9001  
Quality  
Management  
System  
1999



ISO 14001  
Environmental  
Management  
System  
2004



OHSAS 18001  
Occupational  
Health and Safety  
Management System  
2006

**CONSTRUCCIONS COTS I CLARET**

**TLF** 938 734 404  
**FAX** 938 735 905

**E-MAIL** [cotsiclaret@cotsiclaret.com](mailto:cotsiclaret@cotsiclaret.com)  
**WEB** [www.cotsiclaret.com](http://www.cotsiclaret.com)





## PROJECT: NEW PRIMARY HEALTHCARE CENTRE BUILDING

**Developer:** Government of Catalonia - GISA

**Management:** Mr Joan Arnau i Farrás and Ms Carme Muñoz i Ramírez

**Constructed area:** 1.335,75 m<sup>2</sup>

**Location:** SANT VICENÇ DE CASTELLET



ISO 9001  
Quality  
Management  
System  
1999



ISO 14001  
Environmental  
Management  
System  
2004



OHSAS 18001  
Occupational  
Health and Safety  
Management System  
2006

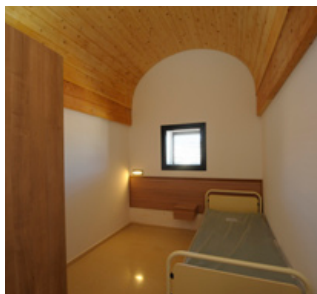
**CONSTRUCCIONS COTS I CLARET**

**TLF** 938 734 404  
**FAX** 938 735 905

**E-MAIL** [cotsiclaret@cotsiclaret.com](mailto:cotsiclaret@cotsiclaret.com)  
**WEB** [www.cotsiclaret.com](http://www.cotsiclaret.com)



**COTS I CLARET**



## PROJECT: NURSING HOME RECEPTION CENTRE FOR PEOPLE WITH PHYSICAL AND PSYCHOLOGICAL DISABILITIES

**Developer:** Fundació els Garrofers  
**Management:** Mr David Sainz i Viladecans  
**Constructed area:** 2.754,97 m<sup>2</sup>  
**Developed area:** 4.385 m<sup>2</sup>  
**Location:** CANET DE MAR



### CONSTRUCCIONS COTS I CLARET

**TLF** 938 734 404    **E-MAIL** [cotsiclaret@cotsiclaret.com](mailto:cotsiclaret@cotsiclaret.com)  
**FAX** 938 735 905    **WEB** [www.cotsiclaret.com](http://www.cotsiclaret.com)





## PROJECT: EXTENSION OF CIUTAT MERIDIANA PRIMARY HEALTHCARE CENTRE

**Developer:** Regesa - Societat Urbanística Metropolitana de Rehabilitació i Gestió, S.A.

**Management:** Mr Francesc Xavier Bonet i Lluç

**Constructed area:** 691,13 m<sup>2</sup>

**Developed area:** 359 m<sup>2</sup>

**Location:** BARCELONA



**CONSTRUCCIONS COTS I CLARET**

**TLF** 938 734 404  
**FAX** 938 735 905

**E-MAIL** [cotsiclaret@cotsiclaret.com](mailto:cotsiclaret@cotsiclaret.com)  
**WEB** [www.cotsiclaret.com](http://www.cotsiclaret.com)





## PROJECT: CONSTRUCTION OF A PRIMARY HEALTHCARE CENTRE

**Developer:** Government of Catalonia - GISA

**Management:** Mr Lluís Xavier Comerón i Graupera

**Constructed area:** 2.211 m2

**Location:** SABADELL



ISO 9001  
Quality  
Management  
System  
1999



ISO 14001  
Environmental  
Management  
System  
2004



OHSAS 18001  
Occupational  
Health and Safety  
Management System  
2006

**CONSTRUCCIONS COTS I CLARET**

**TLF** 938 734 404  
**FAX** 938 735 905

**E-MAIL** [cotsiclaret@cotsiclaret.com](mailto:cotsiclaret@cotsiclaret.com)  
**WEB** [www.cotsiclaret.com](http://www.cotsiclaret.com)



**COTS i CLARET**





**PROJECT: RENOVATION AND EXTENSION OF THE NURSING HOME FOR THE ADAPTATION AND CREATION OF NEW SOCIAL-HEALTH CARE PLACES**

**Developer:** INSTITUCIÓ BENÈFICA AMICS DELS AVIS  
**Management:** Mr Joan Escalè i Estrada/Mr Lluís Piqué i Sancho  
**Constructed area:** 2.101,21 m2  
**Location:** NAVARCLES



**CONSTRUCCIONS COTS I CLARET**

**TLF** 938 734 404    **E-MAIL** cotsiclaret@cotsiclaret.com  
**FAX** 938 735 905    **WEB** www.cotsiclaret.com





**PROJECT: CONSTRUCTION OF A CARE HOME**

**Developer:** Centre Residencial del Bages, S.L.

**Management:** Mr Josep M<sup>a</sup> Esquiús Prat

**Constructed area:** 2.943,10 m<sup>2</sup>

**Location:** Santiago Rosinyol St, AVINYÓ



ISO 9001  
Quality  
Management  
System  
1999



ISO 14001  
Environmental  
Management  
System  
2004



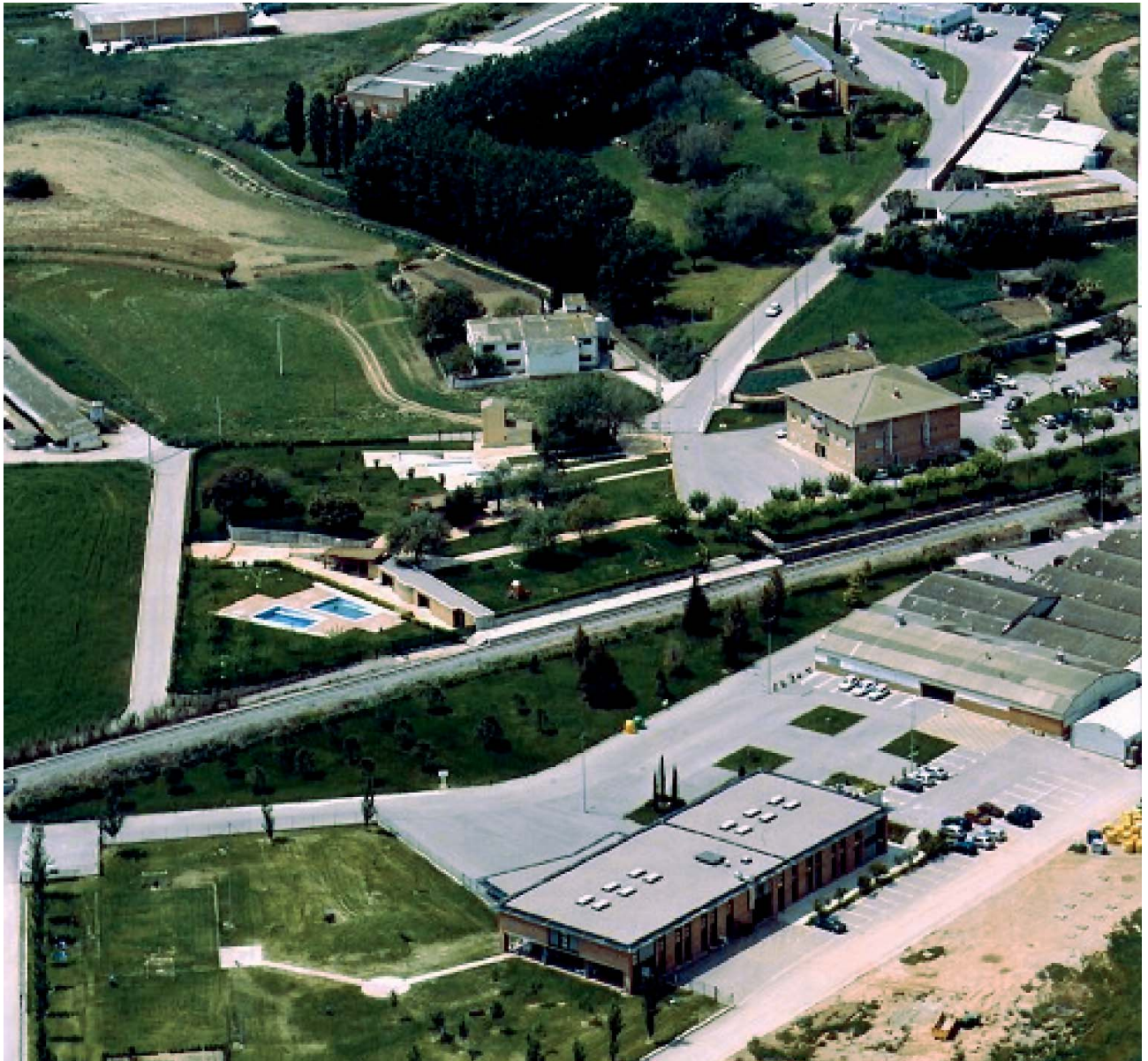
OHSAS 18001  
Occupational  
Health and Safety  
Management System  
2006

**CONSTRUCCIONS COTS I CLARET**

**TLF** 938 734 404  
**FAX** 938 735 905

**E-MAIL** [cotsiclaret@cotsiclaret.com](mailto:cotsiclaret@cotsiclaret.com)  
**WEB** [www.cotsiclaret.com](http://www.cotsiclaret.com)





**PROJECT: CONSTRUCTION OF THE "JERONI MORAGUES" SCHOOL, EXTENSION OF OCCUPATIONAL WORKSHOPS, NURSING HOME AND DAY CENTRE FOR PEOPLE WITH SEVERE PSYCHOLOGICAL DISABILITIES, NEW SANTA MARIA DE COMABELLA FARMHOUSE BUILDING AS A GENERAL OFFICE AND NEW OCCUPATIONAL CENTRE, OVER DIFFERENT PHASES**

**Developer:** Ampans  
**Management:** Mr Jaume Espinal i Farré  
**Constructed area:** 8.725 m2  
**Location:** SANTPEDOR



ISO 9001  
Quality  
Management  
System  
1999



ISO 14001  
Environmental  
Management  
System  
2004



OHSAS 18001  
Occupational  
Health and Safety  
Management System  
2006

**CONSTRUCCIONS COTS I CLARET**

**TLF** 938 734 404    **E-MAIL** [cotsiclaret@cotsiclaret.com](mailto:cotsiclaret@cotsiclaret.com)  
**FAX** 938 735 905    **WEB** [www.cotsiclaret.com](http://www.cotsiclaret.com)

**CONSTRUCCIONS COTS I CLARET**

Sant Fruitós, 4  
08242 Manresa, Spain

TLF + 34 938 734 404

E-MAIL [cotsiclaret@cotsiclaret.com](mailto:cotsiclaret@cotsiclaret.com)  
WEB [www.cotsiclaret.com](http://www.cotsiclaret.com)